

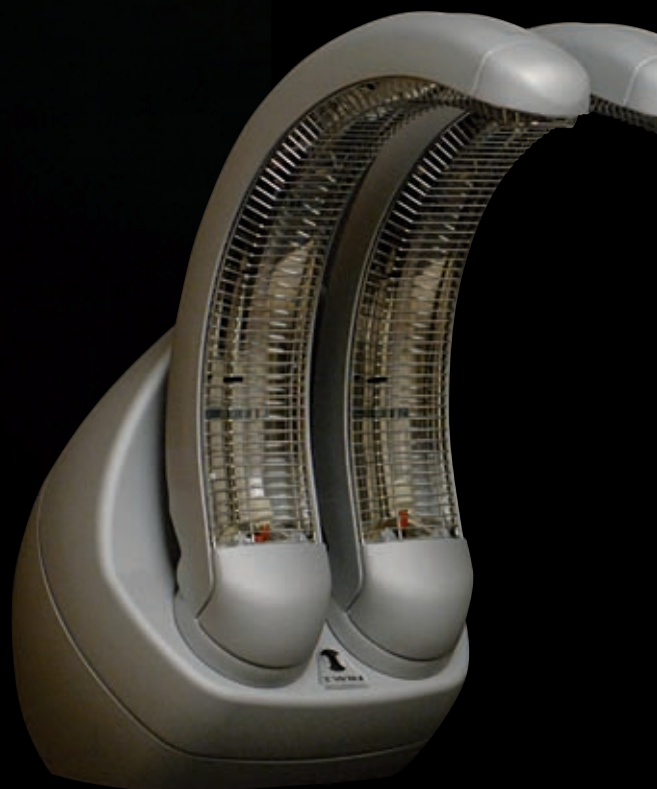
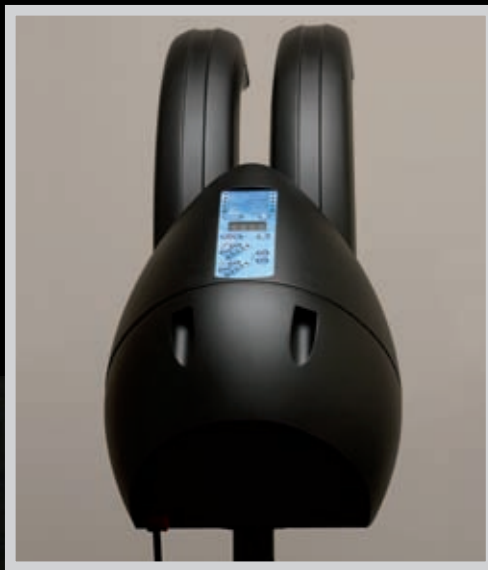
*“Twin”* hts  
Hairdryer



*Made in Italy*



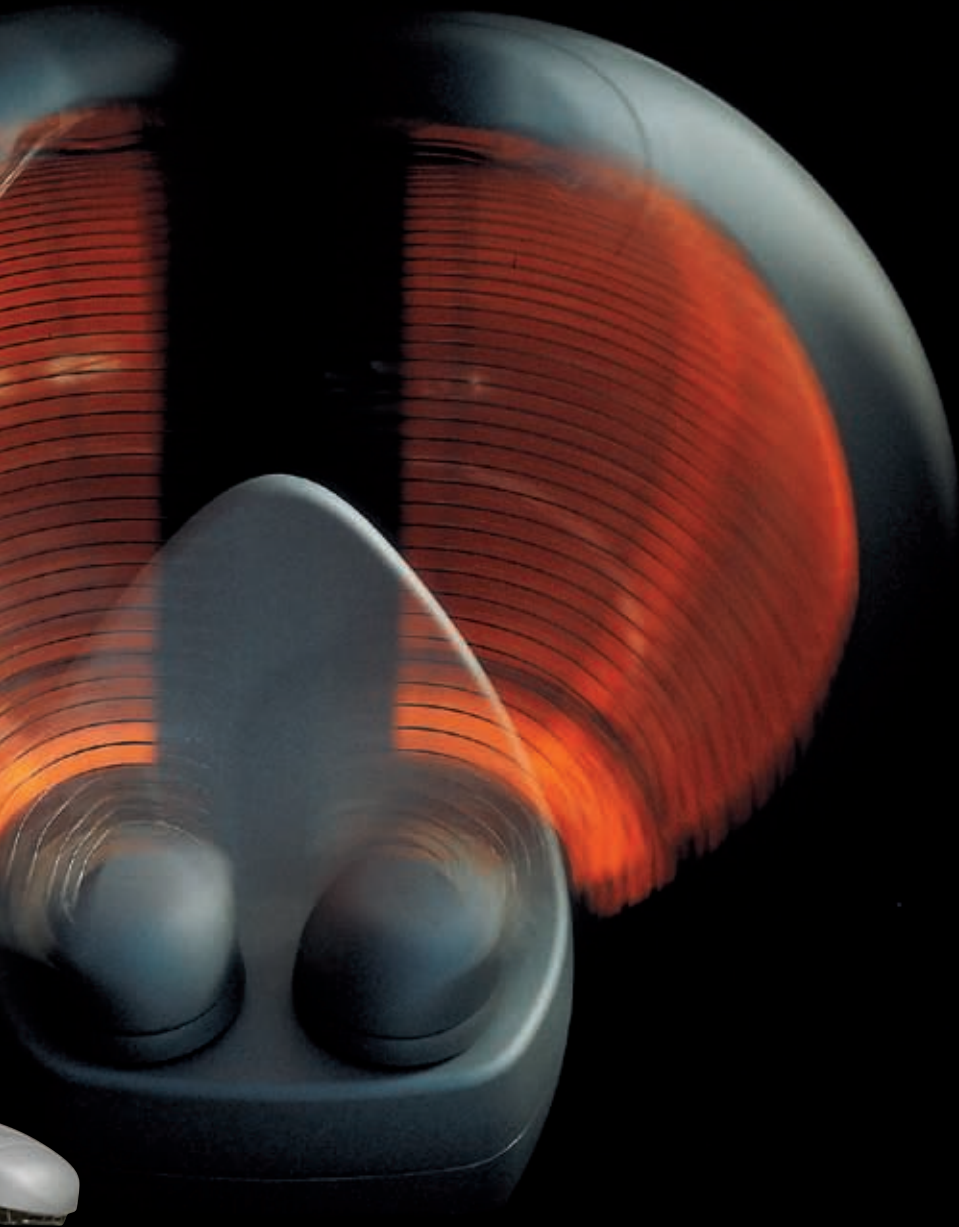
*l'unico sistema rotante con diffusione di vento caldo*  
the only rotating system with adjustable warm air diffusion for a well-ba



*Brevettato / Patented*

lo per una asciugatura naturale  
balanced natural drying "summer effect"

Made in Italy



*"Twin" hts*  
Hairdryer

# "Twin" bts Hairdryer



**"Elettronico o manuale per":**

*Colore...*

*Permanente...*

*Schiariture...*

*Brushing...*

*Volume...*

*Trattamenti...*

**Diffusione calore:**

raggi infrarossi e ventilazione (Min/Med/Max)

**Potenze:**

500-900-1500 watts - 110/220 Volts - 50/60 Hz.

**Rotazione:**

30 secondi (rotazione completa)

**Versioni:**

fissaggio a muro, o piedistallo

**Colori:**

grigio argento, grigio scuro

L'asciugapelli "Twin" è costruito nel rispetto delle normative CEE

**"Electronic or manual use for":**

*Colouring...*

*Perming...*

*Mèches...*

*Brushing...*

*Volume...*

*Treatments...*

**Heat diffusion:**

infra-red rays and ventilation (Min/Med/Max)

**Power:**

500-900-1500 watts - 110/220 Volts - 50/60 Hz.

**Rotation:**

30 sec. (full rotation)

**Fitting:**

wallarm or floor mount.

**Colours:**

silver grey, dark grey, black, white

"Twin" hairdryer conforms too CEE regulations.

*Made in Italy*

# "Twin" bts Hairdryer



By: **FRE.GIS** srl

Via Toscana, 38 - Zona Industriale Gello  
56025 Pontedera (PI) - ITALY

Tel. +39 0587 290506

Fax +39 0587 291097

fregis@fregisitaly.com

www.fregisitaly.com